

## Attachment

## 10

## Greater Los Angeles County Region

*IRWM Implementation Grant Proposal**Disadvantaged Community Assistance*

## I. Introduction

The Greater Los Angeles County Region (Region) encompasses many diverse communities, and many of those communities include substantial areas that meet the definition of a Disadvantaged Community (DAC).<sup>1</sup> Oftentimes these DACs have critical water supply and/or water quality needs that the Region seeks to address through the implementation of various projects. These projects may also provide other benefits to DAC areas such as flood protection and new recreational opportunities.

Four projects in this Proposal have been identified as contributing to critical water-related needs of DAC areas. They include:

- Marsh Park Phase II Project
- Peck Water Conservation Improvement Project
- South Gardena Recycled Water Pipeline Project
- Vermont Avenue Stormwater Capture and Green Street Project

---

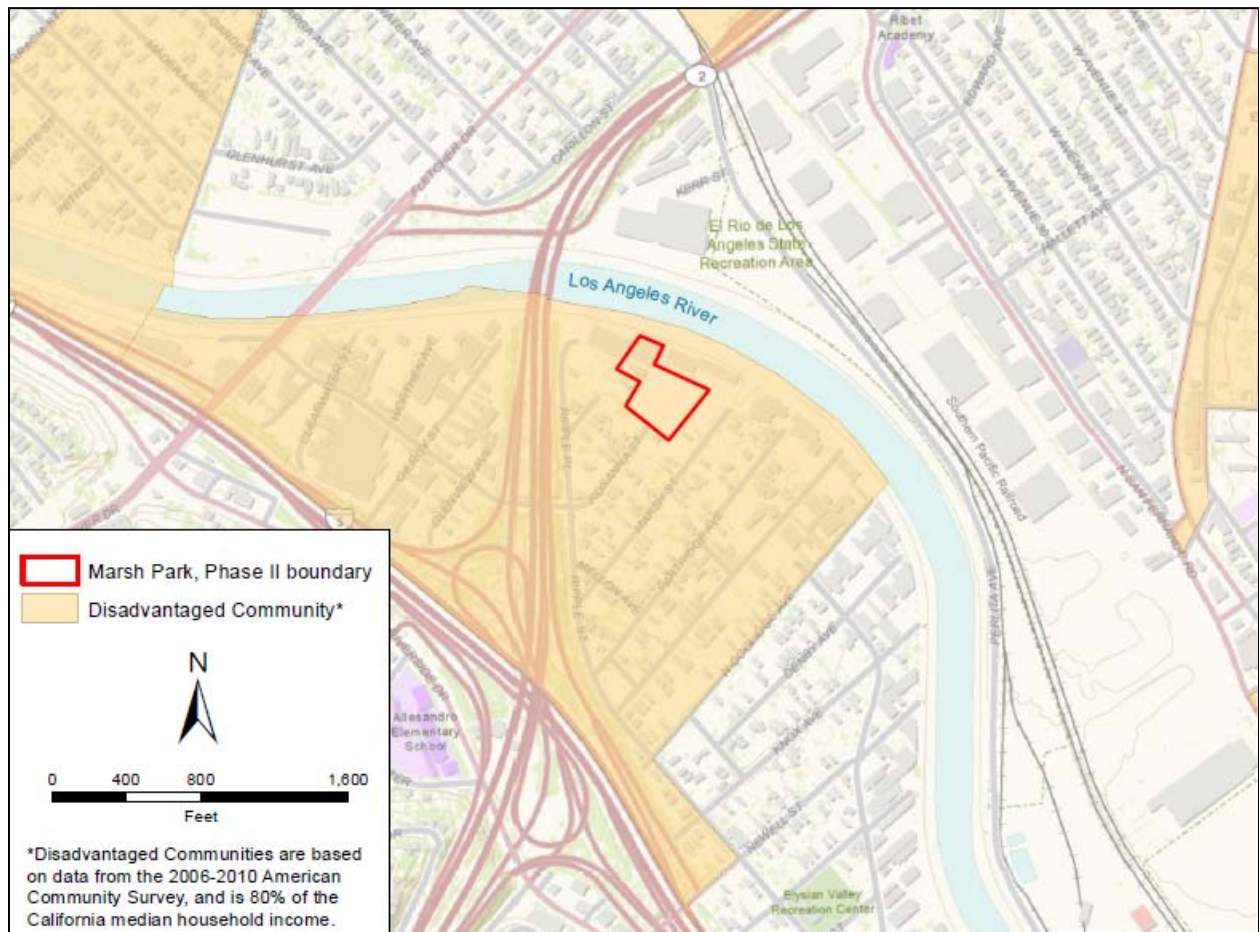
<sup>1</sup> A DAC is defined as communities with an annual median household income below the DAC threshold of \$48,706, or 80% of the Statewide median household income.

II. Marsh Park, Phase II Project

*Documentation of the Presence of DACs*

The Marsh Park, Phase II Project overlays the DAC-designated US Census Block Group number 06-037-187200-2, which has a median household income of \$44,338. The DAC areas overlying the Project are illustrated in Figure 10-1. The Project is entirely within a DAC-designated area.

**Figure 10-1: DAC area within Marsh Park Phase II Project boundaries**



*Description of DAC Needs*

### Critical Lack of Park Space

In the built-out metropolis of Los Angeles, park development efforts oftentimes involve revitalization of “compromised” natural resources like the Los Angeles River. According to the Trust for Public Land, more than 2.6 million people in the Los Angeles area do not live within a quarter mile of a park. The City of Los Angeles ranks in the bottom six of high-density American cities providing parkland per capita. While the City has 6.2 park acres per 1,000 residents overall, communities that are predominately Latino have 1.6 park acres per 1,000 residents; Asian-Americans/Pacific Islanders have 1.2 park acres per 1,000 residents; and African American neighborhoods have 0.8 park acres per 1,000 residents. In contrast, predominately White neighborhoods enjoy 17.4 park acres per 1,000 residents.

The Elysian Valley community where the Project is located fares far worse. According to the Community Fact Finder Report, the usable park space per 1,000 residents within a 0.25 mile radius of the Project is 0.21 acres.

The current Marsh Park, completed as part of Phase I, offers residents 0.58 acres of parkland with amenities, such as a skate park, picnic tables, benches, a barbeque pit, playground and riverfront sitting areas. However, the predominantly minority, working class residents voiced their desire during community meetings for a more sizable park to accommodate a larger range of activities.

### Critical Lack of Access to the Los Angeles River

The property contains two industrial buildings and vacant land, and historically it was used as parking and industrial space. The Project site contains a 3,105 square foot manufacturing building and a 14,300 square foot warehouse.

The industrial character of the site’s existing condition is typical in the surrounding neighborhood, Elysian Valley. The inaccessible Los Angeles River channel has maintenance roads along its banks, Interstate 5, local Highway 2, and commercial railroad tracks that create a limited access border, isolating it from quality of life resources such as recreation, commerce and culture. Even within the community, residences are segregated from the Los Angeles River

Bike Path by a large, impassable swath of industrial parcels that currently characterize the neighborhood's riverfront.

The demolition of two industrial buildings on site will create more recreational access to the Los Angeles River Bike Path, as well as more visual access to the views of the river, nearby hills and the San Gabriel Mountains.

#### Water Quality

Based on Mountains Recreation and Conservation Authority's (MRCA) 6-year community outreach and the *State of the River, The Fish Study* (Friends of the Los Angeles River, 2008), fishing activity is on the rise in the river area adjacent to the Project. However, there is insufficient data to determine whether the fish is safe to eat from a toxicity standpoint. In the absence of this data, it is imperative to ensure best water management practices to protect against fish toxicity.

#### *DAC Support and Outreach*

A number of agencies have submitted letters indicating their support of the Project, including:

- City of Los Angeles, River Project Office
- County of Los Angeles, Department of Public Works, Watershed Management Division
- Friends of the Los Angeles River
- Kevin de León, Assembly member of the California Legislature, 45<sup>th</sup> District (currently State Senator of the 22<sup>nd</sup> Senate District)
- Los Angeles Neighborhood Land Trust
- Los Angeles River Revitalization Corporation
- Los Angeles County Bicycle Coalition
- Anahuak Youth Soccer Association

Letters of support are located in Appendix 10-1.

---

**Disadvantaged Community Assistance**

The MRCA has conducted extensive outreach and has dedicated staff to planning and developing parks in the underserved areas of Los Angeles. To this end, they have established an Urban Parks and Watershed Division dedicated to conserving and restoring natural settings in the urban environment. The MRCA has worked extensively to foster relationships with the community surrounding Marsh Park since 2000. MRCA met with the community members who used the previous phase of Marsh Park and learned from them about the needs of potential users of the next phase of the park.

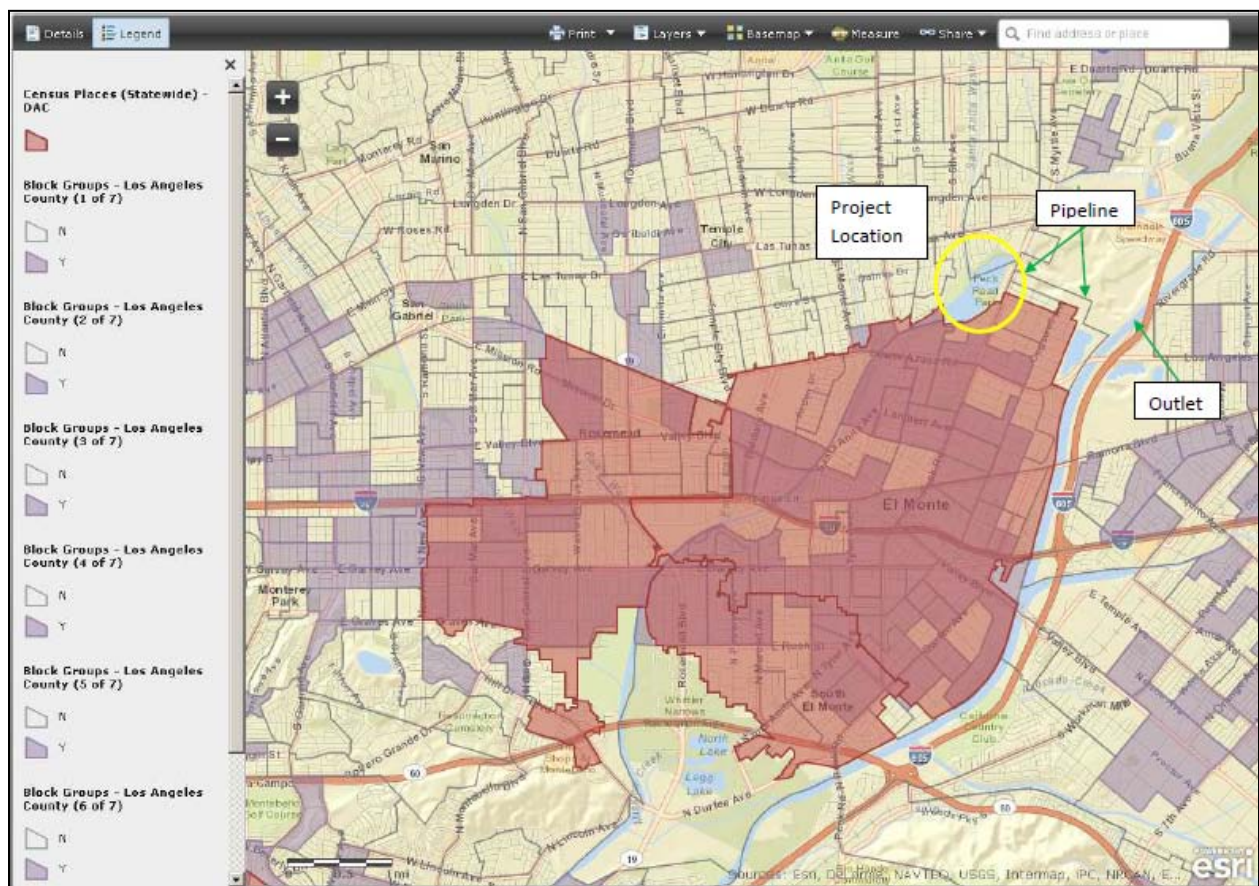


### III. Peck Water Conservation Improvement Project

#### *Documentation of the Presence of DACs*

The City of El Monte just downstream of the Peck Road Spreading Basin is considered a DAC. According to 2006-2010 American Community Survey (ACS) data, its median household income is \$42,750. Figure 10-2 shows the location of the Project and the adjacent DAC area of the City of El Monte.

**Figure 10-2: DAC area adjacent to the Peck Water Conservation Improvement Project**



#### *Description of DAC Needs*

The City of El Monte and the immediate surrounding areas rely on nine small mutual water companies for water supply. These small mutual water suppliers rely on a mixture of imported water and groundwater. Increasingly the Sacramento-San Joaquin Delta is becoming an unreliable source of water for California and especially for Southern California. With increasing

unreliability come increasing costs to providing water to consumers. There are serious concerns that the DACs in the El Monte area will endure disproportionate harm because of rapidly escalating costs associated with imported water.

It is imperative that new groundwater recharge be maximized to take advantage of wet year stormwater flows. The elevated groundwater from additional recharge would allow an increase in pumping in dry years to supplement reduced imported water supplies. The Peck Water Conservation Improvement Project will provide an increase in local water supplies for DACs and help to address a critical water supply concern in the Main San Gabriel Basin.

#### *Documentation of DAC Outreach and Support*

Two entities representing DACs in El Monte have expressed support for the project: Mujeres de la Tierra and the San Gabriel Valley Conservation Corps have expressed support for the Project, as indicated by the letters provided in Appendix 10-2. Outreach planned for the Project includes:

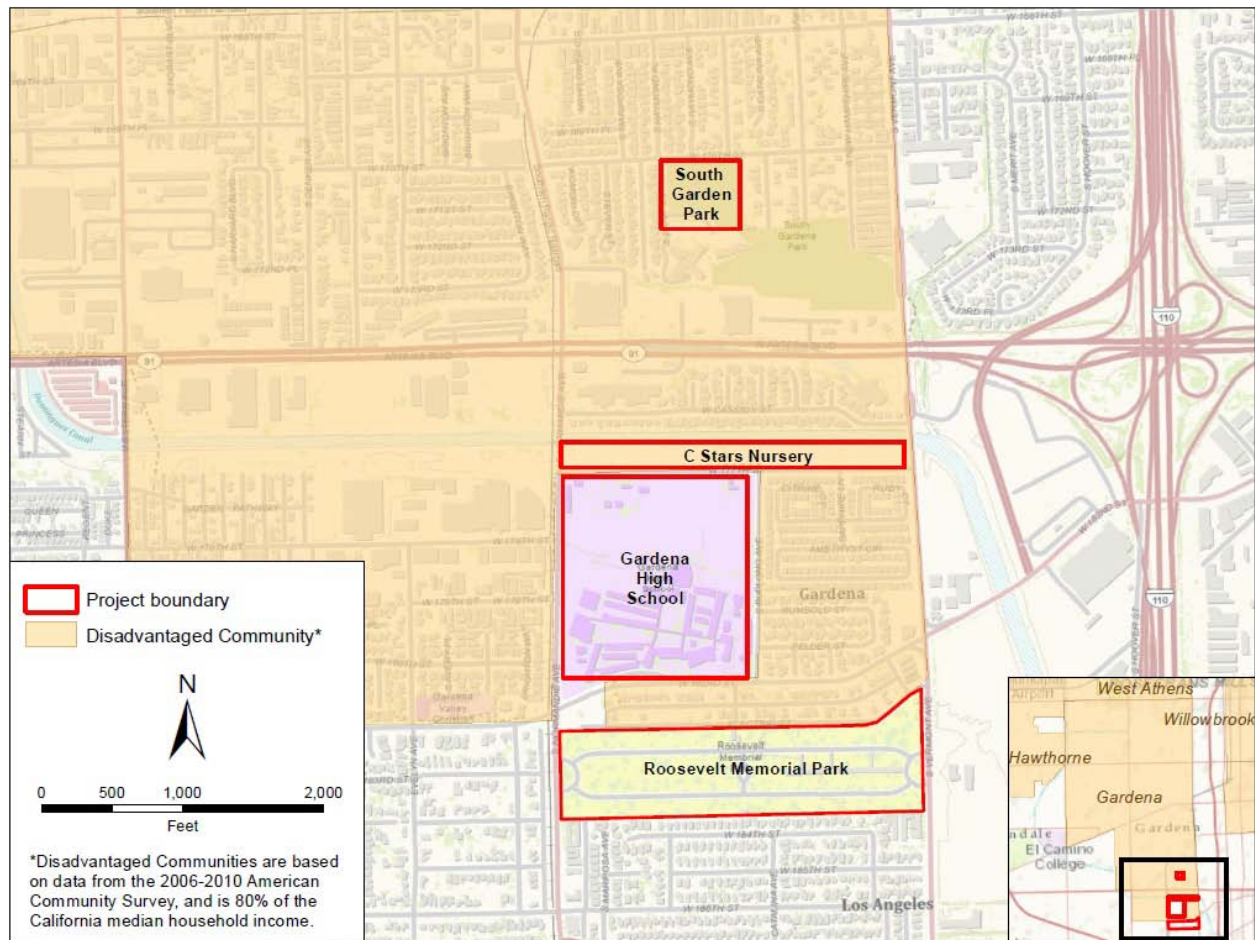
- Stakeholder meetings will be held during the various design phases with Project stakeholders, including the County of Los Angeles Department of Parks and Recreation, cities in the area, and affected water agencies.
- Community meetings will be held during the planning process, specifically after the 60% design plans and 100% design plans are completed.
- Information and scoping meetings will be held during the environmental phase.
- Multi-language flyers and signage will be mailed and posted to inform the community both about the Project and about upcoming meetings.

### IV. South Gardena Recycled Water Pipeline Project

#### Documentation of the Presence of DACs

The South Gardena Recycled Water Pipeline Project is located in the City of Gardena. This entire area is considered a DAC according to 2006-2010 ACS data as the median household income is \$46,837. All customers to be served recycled water by the Project are either located in or adjacent to this DAC, as shown in the map below; and 100% of the Project facilities are within DAC designated areas.

**Figure 10-3: DAC area adjacent to the South Gardena Recycled Water Pipeline Project**





*Description of DAC Needs*

The City of Gardena endures a high cost for potable water supplies. This Project will reduce Gardena's demand for potable water used by offsetting a portion of Gardena's irrigation needs with recycled water, a lower-cost supply alternative.

*Documentation of DAC Outreach and Support*

The South Gardena Recycled Water Pipeline Project is supported by the City of Gardena, as indicated by the letter included in Appendix 10-3. In order to obtain this support, extensive outreach was conducted.

The Council for Watershed Health performed a DAC outreach project in the City of Gardena. This consisted of two community meetings, outreach to the City of Gardena, door-to-door canvassing, and a sidewalk engagement event. Though they focused on another DAC area of Gardena (northeast Gardena), the institutional and municipal outreach revealed a keen interest in recycled water among Gardena residents. Numerous complaints were received from the northeast Gardena area about the condition of municipal and institutional landscapes such as parks, schools and medians. Those community members were displeased with the lack of irrigation supplies in the City of Gardena and the high cost of potable water served. Based on this information, the West Basin Municipal Water District promptly re-initiated discussions with the City of Gardena about a recycled water pipeline concept that stalled after federal funding became unavailable in fiscal year 2010-11.

DAC members contacted included:

- Northeast Gardena residents:
  - 345 homes canvassed
  - 47 questionnaires collected
  - 17 On-the-spot interviews at sidewalk engagement event
- Northeast Gardena Businesses and institutions:
  - Junipero Serra High School
  - Gardena High School

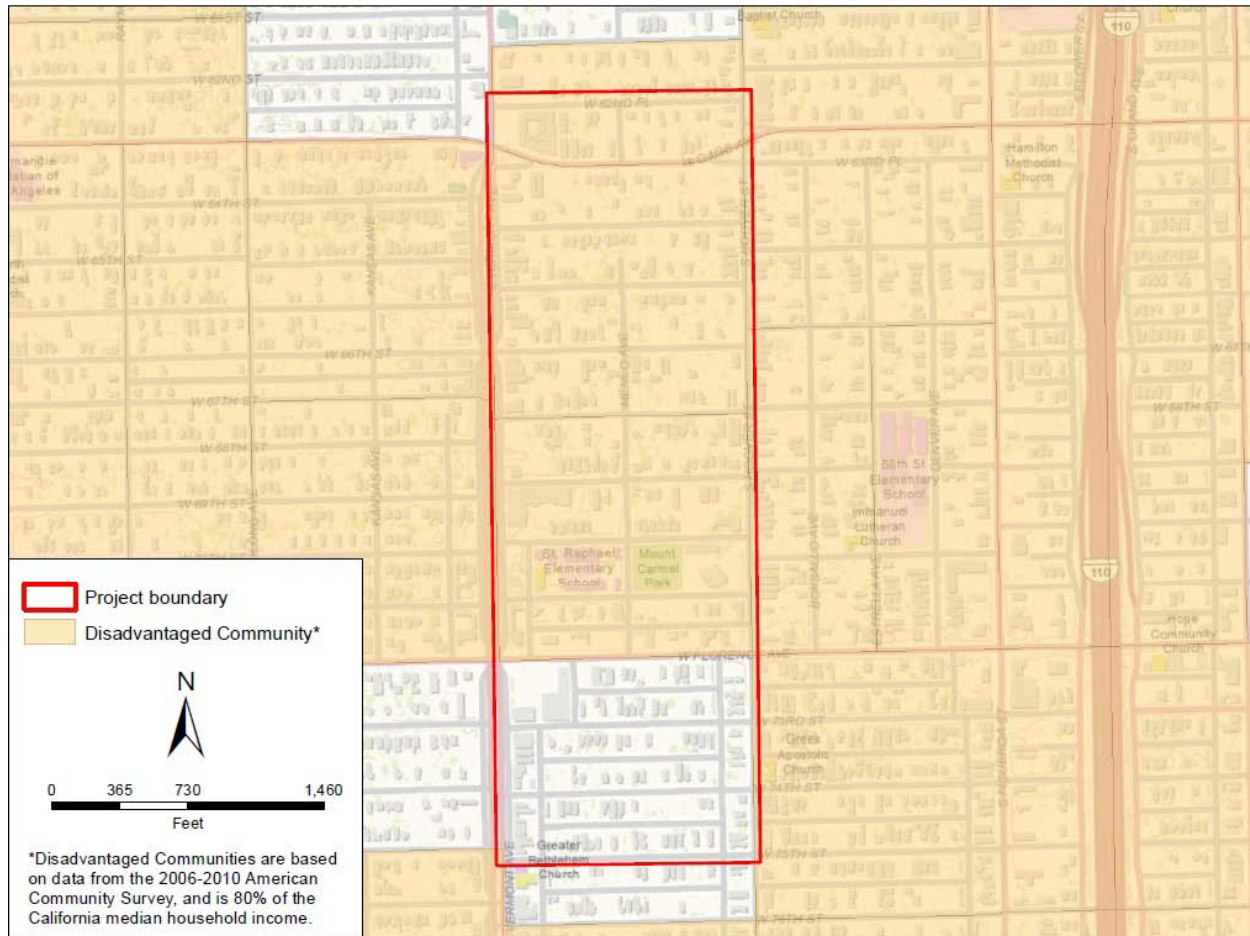
- Gardena Volunteer Program
- Volunteer Center
- Moneta Nursery
- El Taller Centro Cristiano
- 135th Street Elementary School

V. Vermont Avenue Stormwater Capture and Green Street Project

*Documentation of the Presence of DACs*

The Vermont Avenue Stormwater Capture and Green Street Project is located adjacent to the following DAC-designated US Census Block Group numbers: 06-037-237101-5, 06-037-237500-1, 06-037-237500-2. These census blocks have median household incomes of \$18,221, \$40,059, and \$33,438, respectively, as determined by 2006-2010 ACS data. The DACs adjacent to the Project location are illustrated in Figure 10-4. Approximately 75% of the Project is within a DAC-designated area.

**Figure 10-4: DAC area within Vermont Stormwater Capture and Green Street Project boundaries**



*Description of DAC Needs*

This Project will help to meet surface water quality needs in the Vermont Corridor. The Ballona Creek watershed, in which the Project is located, is water quality impaired for a number of constituents, including bacteria, several types of metals, toxic pollutants, and trash. Stormwater and urban runoff treatment are necessary to abate or prevent surface/groundwater contamination and are mandated by the Los Angeles Regional Water Quality Control Board which has established Total Maximum Daily Loads (TMDLs) for these constituents.

*Documentation of DAC Outreach and Support*

This Project is supported by the local neighborhood. A letter of support has been provided by Thaddeus Carroll of Empowerment Congress Central Area Neighborhood Development Council, a city-certified local group which works to encourage area development (see Appendix 10-4).

Outreach meetings have been conducted with neighborhood councils in the area regarding previously proposed water quality projects, and past outreach efforts have been undertaken by the Association of Community United for South Los Angeles (ACUSLA).

The Project partner, Heal the Bay, has met with administrators at Saint Raphael School on numerous occasions to discuss ways to partner on educational endeavors. In September 2012, Heal the Bay partnered with Saint Raphael School to organize a Coastal Cleanup Day event in the Project area to engage community partners and educate them about pollution. Heal the Bay staff and City of Los Angeles staff have also spoken to community members informally about the Project during site visits to the project area.

A minimum of three surveys will be administered for the Project in order to gather baseline data and data on the public response to the completed Project. Surveys will be administered in the language preferred by the community members, likely in Spanish and English. A number of methods may be employed to distribute the surveys, including but not limited to surveys given at community events or meetings, and door-to-door canvassing. These surveys can serve as a template for collecting data, and their results and lessons can be used to inform future projects.

---

**Disadvantaged Community Assistance**

Technical assistance will be provided in the form of education and a “BMP Toolbox” for residents to utilize in the Project area. The BMP Toolbox will consist of a list of options for Best Management Practices (BMPs) that may be utilized on private property and will include information needed to install these BMPs. In addition, outreach and education will be provided to the community to inform them of water quality issues and to explain why such installations are important for water quality protection. Also, information about native plants and their maintenance will be provided.



This page intentionally left blank.

**Appendix 10- : Marsh Park, Phase II Project Support Letters from DACs**

This page intentionally left blank.

STATE CAPITOL  
P.O. BOX 942849  
SACRAMENTO, CA 94249-0045  
(916) 319-2045  
FAX (916) 319-2145

Assembly  
California Legislature



KEVIN DE LEÓN  
ASSEMBLYMEMBER, FORTY-FIFTH DISTRICT

November 10, 2008

California River Parkways Grant Program  
The Resources Agency  
Attn: Bond and Grant Units  
1416 Ninth Street, Suite 1311  
Sacramento, CA 95814

Dear Sir or Madam:

I write to urge your support of the Mountains Recreation and Conservation Authority's California River Parkways Grant request for the Marsh Park project. This project will provide much needed open space and recreational benefits to the surrounding communities.

With less than one acre of open space, per one-thousand residents, my constituents of the forty-fifth Assembly District suffer from some of the highest park poverty levels in the United States. An opportunity such as the Marsh Park project seeks to transform the neighboring community, while serving a critical role in Southern California.

The Marsh Park project will help to educate children on the importance of the Los Angeles River, the natural habitat, and the existing wildlife, while further promoting exercise and a healthy lifestyle. This community investment will provide great returns for Los Angeles residents and I strongly urge your support in funding the project.

If you have any questions, please contact my office at (323) 225-4545.

Sincerely,

A handwritten signature in cursive script that reads "Kevin de León".

**KEVIN DE LEÓN**  
Assistant Majority Leader  
Forty-Fifth Assembly District

This page intentionally left blank.





# COUNTY OF LOS ANGELES

## DEPARTMENT OF PUBLIC WORKS

*"To Enrich Lives Through Effective and Caring Service"*

900 SOUTH FREMONT AVENUE  
ALHAMBRA, CALIFORNIA 91803-1331  
Telephone: (626) 458-5100  
<http://dpw.lacounty.gov>

DEAN D. EFSTATHIOU, Acting Director

ADDRESS ALL CORRESPONDENCE TO:  
P.O. BOX 1460  
ALHAMBRA, CALIFORNIA 91802-1460

IN REPLY PLEASE

REFER TO FILE: **WM-5**

November 6, 2008

Mr. Mike Chrisman  
Secretary of Resources  
State of California  
Resources Agency  
1416 Ninth Street, Suite 1311  
Sacramento, CA 95814

Dear Mr. Chrisman:

### **MARSH PARK PROJECT PROPOSITION 84 LETTER OF PROJECT SUPPORT**

We support the efforts of the Mountains Recreation and Conservation Authority to secure funding from Proposition 84 for the Marsh Park Project. The proposed project will restore habitat and improve public use amenities adjacent to the Los Angeles River in a manner consistent with the Los Angeles River Master Plan. We look forward to working with the Mountains Recreation and Conservation Authority on future enhancements to the watershed.

If you have any questions, please contact Mr. Dan Sharp at (626) 458-4345 or [dsharp@dpw.lacounty.gov](mailto:dsharp@dpw.lacounty.gov).

Very truly yours,

DEAN D. EFSTATHIOU  
Acting Director of Public Works

A handwritten signature in cursive script, appearing to read "Mark Pestrella".

MARK PESTRELLA  
Assistant Deputy Director  
Watershed Management Division

DBS:jtz

P:\wmpub\Secretarial\2008 Documents\Letters\MarshParkProp84.doc\C08439

cc: Mountains Recreation and Conservation Authority (Leslie Chan)

This page intentionally left blank.



# Anahuak

Youth Soccer Association

5317 N. Figueroa Suite # 1 Los Angeles CA, 90042

Email: [anahuaksoccer@mail.com](mailto:anahuaksoccer@mail.com)

September 11, 2012

Board Chair, George Lange  
Mountains Recreation and Conservation Authority  
570 West Avenue 26, Suite 100  
Los Angeles, CA 90065

Dear Mr. Lange,

I support the proposed Marsh Park project and recommend that the MRCA Board votes in favor of adopting the current plans.

The expanded park which serves a larger role within the Los Angeles River Revitalization effort will be a wonderful and invaluable amenity to the Elysian Valley community, allowing more people to access the upper stretches of the river and the Los Angeles River Trail for many generations to come. The planned improvements in the park will be of great benefit to the immediate neighborhood along with the community at large.

The design has been carefully and thoughtfully conceived and promotes a sustainable solution for stormwater runoff, while providing wonderful opportunities for outdoor recreation, community gatherings and environmental education programs.

We appreciated the MRCA's presentation of the design to the coaches of the Anahuak Youth Soccer Association at our August monthly meeting. The coaches look forward to planning team celebrations and meetings in the park's beautiful new community gathering spaces. The teams from Elysian Valley already attend many of the educational programs at the existing Marsh Park and remain committed to connecting their players to the increased educational opportunities that will be offered at the expanded park.

I am in complete support of the Marsh Park project and will stand behind this park every step of its way to fruition!

Best regards,

Signed Raul Macias  
President /Founder of Anahuak

This page intentionally left blank.

CITY OF LOS ANGELES  
CALIFORNIA

DEPARTMENT OF  
PUBLIC WORKS  
BUREAU OF  
ENGINEERING

BOARD OF PUBLIC WORKS  
MEMBERS

ANDREA A. ALARCÓN  
PRESIDENT

JERILYN LÓPEZ MENDOZA  
VICE PRESIDENT

CAPRI W. MADDOX  
COMMISSIONER

STEVEN T. NUTTER  
COMMISSIONER

VALERIE LYNNE SHAW  
COMMISSIONER

ARLEEN P. TAYLOR  
EXECUTIVE OFFICER



ANTONIO R. VILLARAIGOSA  
MAYOR

GARY LEE MOORE, P.E.  
CITY ENGINEER  
1149 S. BROADWAY, SUITE 700  
LOS ANGELES, CA 90015-2213

<http://eng.lacity.org>

September 10, 2012

Mr. George Lange  
Board Chair  
Mountains Recreation and Conservation Authority  
570 West Avenue 26, Suite 100  
Los Angeles, CA 90065

Dear Mr. Lange,

On behalf of the City's Los Angeles River Project Office, which is tasked with implementing the City Council-adopted, long-range Los Angeles River Revitalization Master Plan (LARRMP), I am writing to recommend that the Mountains Recreation and Conservation Authority Board vote in favor of adopting the current plans for the proposed *Marsh Park Phase II Project*. This project is an expressed priority of the LARRMP as it is located in the Taylor Yard Opportunity Area (project no. 164, 10-31, LARRMP 2007) and included on the list of priority projects adopted by the City Council in 2008 (C.F. 07-1342-S2).

As you know, the LARRMP is a 20-to-50 year blueprint that recommends more than 240 projects along a 32-mile corridor of the river that is home to more than one million people. It aims to create at least 60 miles of publicly-accessible trails, parks, wildlife corridors, recreational facilities, and cultural amenities expected to result in lasting social and economic improvements, including improved public health and the attraction and retention of family-sustaining jobs. Implementation of the LARRMP involves close collaboration among a variety of public agencies, nonprofit organizations, private sector interests, and countless other groups and individuals. The Mountains Recreation and Conservation Authority has been an active, committed participant in this process and has successfully established itself as a champion of river-sensitive programs and projects; the first phase of *Marsh Park* is evidence of this.

Implementation of the *Marsh Park Phase II Project* can serve as a model for future river projects by simultaneously providing much-needed water quality, public access, wildlife habitat, and open space improvements—goals that are consistent with the LARRMP. In addition to expanding an existing park, the project will create safe public access to the Los Angeles River Bikeway and Juan Bautista de Anza National Historic Trail, accommodating pedestrians and bicyclists and raising awareness of the river's revitalization. The design has





This page intentionally left blank.

been carefully and thoughtfully conceived and promotes a sustainable solution for stormwater runoff while providing wonderful opportunities for outdoor recreation, community gatherings, and environmental education programs.

While overseeing the implementation of the Los Angeles River Revitalization Master Plan, I have participated firsthand in the community based planning processes like the one that has taken place for Marsh Park. These efforts are helping to shape the landscape and the future of Los Angeles. I understand the critical role this particular park will play in establishing a greener, more sustainable presence along this stretch of the Los Angeles River and am grateful for the MRCA's leadership in making it possible.

I am in full support of the *Marsh Park Phase II Project* and look forward to seeing it enjoyed by the community. Please do not hesitate to contact me should you have any questions regarding my recommendation: (213) 485-5762 or via electronic mail: Carol.Armstrong@lacity.org.

Sincerely,



Carol S. Armstrong, Ph.D.  
Director, Los Angeles River Project Office

Cc: Deanna Gomez, Office of Mayor Antonio Villaraigosa  
Lupe Vela, Policy Director, City Council Ad Hoc Committee on the LA River  
Guy Lipa, Office of Councilmember Eric Garcetti, District Thirteen  
Mary Rodriguez, Office of Councilmember Tom LaBonge, District Four  
Barbara Romero, Mountains Recreation and Conservation Authority  
Laura Saltzman, Mountains Recreation and Conservation Authority

This page intentionally left blank.



BOARD MEMBERS

September 12, 2012

Daniel Tellalian  
Chair

Board Chair, George Lange  
Mountains Recreation and Conservation Authority  
570 West Avenue 26, Suite 100  
Los Angeles, CA 90065

Harry B. Chandler  
Vice Chair

Bruce Saito  
Treasurer

Dear Mr. Lange:

Christian Hart  
Secretary

On behalf of the LA River Revitalization Corporation (RRC), I am writing to express our support of the proposed Marsh Park project and recommend that the MRCA Board votes in favor of adopting the current plans.

Allan Abshez  
Member

René Jones  
Member

The RRC was created to support the implementation of the LA River Revitalization Master Plan, adopted by the City of Los Angeles in 2007.

Monica Dodi  
Member

The RRC seeks to change the course of Los Angeles by transforming the LA River in order to improve people's lives. River revitalization can connect our neighborhoods, create open spaces for recreation, improve our environment, promote water quality, and attract investment to the local economy.

Howard Katz  
Member

Jordan Kerner  
Member

The expanded park which serves a larger role within the Los Angeles River Revitalization effort will be a wonderful and invaluable amenity to the Elysian Valley community, allowing more people to access the upper stretches of the river and the Los Angeles River Trail for many generations to come. The planned improvements in the park will be of great benefit to the immediate neighborhood along with the community at large.

Dennis R. Martinez  
Member

Barbara Romero  
Member

Daphne Zuniga  
Member

The design has been carefully and thoughtfully conceived and promotes a sustainable solution for stormwater runoff, while providing wonderful opportunities for outdoor recreation, community gatherings and environmental education programs.

We are in complete support of the Marsh Park project and look forward to seeing this park come to fruition!

Best regards,

Omar Brownson  
Executive Director

This page intentionally left blank.



Los Angeles County Bicycle Coalition  
634 S. Spring St. Suite 821  
Los Angeles, CA 90014  
Phone 213.629.2142  
Facsimile 213.629.2259  
www.la-bike.org

September 14, 2012

The Honorable George Lange, Board Chair  
Mountains Recreation and Conservation Authority  
570 West Avenue 26, Suite 100  
Los Angeles, CA 90065

### **Support for Marsh Park**

Dear Chair Lange:

The Los Angeles County Bicycle Coalition (LACBC) supports the proposed Marsh Park project, which will create much-needed open space and public amenities along the Los Angeles River Bike Path. The Park will open up new access to the River and be a trailhead for people coming to the River from other areas, serving both the local Elysian Valley community and the broader Los Angeles region.

Every June, LACBC hosts its annual River Ride from Griffith Park to Long Beach, along the LA River Bike Path and connecting streets. This new park would serve our event and others like it well, which contributes to our shared overarching goal of River Revitalization. Of particular importance are the public restrooms, which are few and far between along the River Path. Frequent "pit stops" and restrooms are critical if we are to expect families with young children to take advantage of the wonderful recreation opportunities our River has to offer.

The design has been carefully conceived and thoroughly vetted to meet the needs of the local community and region at large, incorporating open space, stormwater filtration, fitness equipment, and public amenities. The Park would further support events, community gatherings, and environmental education programs. LACBC supports this project as part of the broader effort to revitalize the LA River.

Sincerely,

Eric Bruins  
Planning and Policy Director

This page intentionally left blank.



September 11, 2012

Board Chair, George Lange  
Mountains Recreation and Conservation Authority  
570 West Avenue 26 - Suite 100  
Los Angeles, CA 90065

Dear Mr. Lange,

I support the proposed Marsh Park project and recommend that the MRCA Board votes in favor of adopting the current plans.

The expanded park which serves a larger role within the Los Angeles River Revitalization effort will be a wonderful and invaluable amenity to the Elysian Valley community, allowing more people to access the upper stretches of the river and the Los Angeles River Trail for many generations to come. The planned improvements in the park will be of great benefit to the immediate neighborhood along with the community at large.

The design has been carefully and thoughtfully conceived and promotes a sustainable solution for stormwater runoff, while providing wonderful opportunities for outdoor recreation, community gatherings and environmental education programs.

As Executive Director for the Los Angeles Neighborhood Land Trust, who partnered with the SMMC in arranging a lease and funding for the Marsh Park Skate Park, I am excited about the additional amenities that will be offered at this expanded park site - which will only enhance the experience for all park users. I am in complete support of the Marsh Park project and look forward to seeing this park come to fruition!

Best regards,

A handwritten signature in blue ink that reads "Alina Bokde".

Alina Bokde  
Executive Director



This page intentionally left blank.



September 7, 2012

Board Chair, George Lange  
Mountains Recreation and Conservation Authority  
570 West Avenue 26 - Suite 100  
Los Angeles, CA 90065

Dear Mr. Lange,

Friends of the Los Angeles River support the proposed Marsh Park project and recommend that the MRCA Board votes in favor of adopting the current plans.

The expanded park, which serves a larger role within the Los Angeles River Revitalization effort, will be a wonderful and invaluable amenity to the Elysian Valley community, allowing more people to access the upper stretches of the River and the Los Angeles River Trail for many generations to come. The planned improvements in the park will be of great benefit to the immediate neighborhood along with the community at large.

The design has been carefully and thoughtfully conceived and promotes a sustainable solution for stormwater runoff, while providing wonderful opportunities for outdoor recreation, community gatherings and environmental education programs. In fact, FoLAR is in the process of building a mobile visitor and education center – The Los Angeles River Rover – and anticipate that Marsh Park will provide a perfect staging area. We are especially pleased that the expanded design includes a public restroom, a rare amenity on the River.

An enhanced Marsh Park supports FoLAR's mission: to protect and restore the natural heritage of this riparian habitat while also providing much needed access to the River. In addition, the site offers tremendous opportunities for FoLAR and the MRCA to collaborate on educational programming.

We support of the Marsh Park project and look forward to seeing this park come to fruition!

Best regards,

Lewis MacAdams  
Founder and President

**FoLAR**

Los Angeles River Center  
570 W. Ave 26 Suite 250 Los Angeles, CA 90065-1047  
Tel: 323-223-0585  
Fax: 323-223-2289  
WWW.folar.org  
E-Mail: mail@folar.org



This page intentionally left blank.

**Appendix 10-B: Peck Water Conservation Improvement Project Support Letters**

This page intentionally left blank.



Adán Ortega, Jr., Chairman of the Board  
Irma, Muñoz, President & CEO

March 21, 2013

Gale Farber  
County of Los Angeles  
Department of Public Works  
900 South Fremont Avenue  
Alhambra, CA 91803

Dear Ms. Farber:

**LETTER OF SUPPORT PECK WATER CONSERVATION IMPROVEMENT PROJECT**

This letter is in support of the Los Angeles County Flood Control District's Integrated Regional Water Management Plan's project for the Peck Water Conservation Improvement Project. The project also brings much needed attention to Peck Park setting the stage for additional usable recreational area.

The project will construct a pump station and pipeline from Peck Spreading Basin to the San Gabriel River. Peck Spreading Basin has low percolation rates limiting the use of surface that can be used for recreation. San Gabriel River has very high percolation rates. Peck Spreading Basin will be drawn down to create more storage for large storms and recharge this water into the Main San Gabriel Basin. The additional groundwater recharge will help reduce the region's reliance on imported water. The groundwater replenishment directly benefits disadvantaged communities located downstream of the recharge location and by increasing the surface area available for recreation in later phases.

Mujeres de La Tierra believes that all aspects of the project will be greatly beneficial to the residents of El Monte and downstream communities and that it is an effective means to conserve water and improve water management.

Thank you for your consideration of this important project.

Sincerely yours,

Chairman of the Board

570 West Avenue 26, Suite 300, L.A. River Center, Los Angeles, CA 90065  
ph: 323-350-3306  
[info@mujeresdelatierra.org](mailto:info@mujeresdelatierra.org)

This page intentionally left blank.



**SAN GABRIEL VALLEY  
CONSERVATION CORPS**

3629 Cypress Ave, El Monte CA 91731  
Office (626) 579-2484 • Fax (626) 579-2438

Gale Farber  
County of Los Angeles  
Department of Public Works  
900 South Fremont Avenue  
Alhambra, CA 91803

Dear Ms. Farber:

**LETTER OF SUPPORT**

**PECK WATER CONSERVATION IMPROVEMENT PROJECT**

This letter is in support of the Los Angeles County Flood Control District's Integrated Regional Water Management Plan's project for the Peck Water Conservation Improvement Project.

The project will construct a pump station and pipeline from Peck Spreading Basin to the San Gabriel River. Peck Spreading Basin has low percolation rates while the San Gabriel River has very high percolation rates. Peck Spreading Basin will be drawn down to elevation 290 feet to create more storage for large storms and recharge this water into the Main San Gabriel Basin to replenish groundwater supplies. The additional groundwater recharge will help to alleviate the region's reliance on imported water. The groundwater replenishment directly benefits Disadvantaged Communities located downstream of the recharge location.

San Gabriel Valley Conservation Corps. believes that all aspects of the project will be greatly beneficial to the residents of San Gabriel Valley and that it is an effective means to conserve water and improve water management.

Thank you for your consideration of this important project.

Very truly yours,

Daniel Oaxaca  
Founder



This page intentionally left blank.

**Appendix 10-C: South Gardena Recycled Water Pipeline Project Support Letter**

This page intentionally left blank.



ANTONIO R. VILLARAIGOSA  
Mayor

Commission  
THOMAS S. SAYLES, *President*  
ERIC HOLOMAN, *Vice President*  
RICHARD F. MOSS  
CHRISTINA E. NOONAN  
JONATHAN PARFREY  
BARBARA E. MOSCHOS, *Secretary*

RONALD O. NICHOLS  
General Manager

March 26, 2013

Mr. Mark Cowin, Director  
California Department of Water Resources  
P.O. Box 942836  
Sacramento, CA 94236-0001

Dear Mr. Cowin:

Subject: Funding Support for the South Gardena Recycled Water Pipeline Project

This letter is in support for the West Basin Municipal Water District's (West Basin) Proposition 84 Integrated Regional Water Management Plan (IRWMP) South Gardena Recycled Water Pipeline Project (Project). The Los Angeles Department of Water and Power (LADWP) is in full support for the Project including providing funding, in combination with the grant, to cover costs to construct pipeline to LADWP's customers. This Project will bring much needed recycled water to the City of Gardena as well as to the City of Los Angeles at the southern portion of the pipeline.

The Project will deliver 120 acre-feet per year to four sites, two of which are served by LADWP and will greatly benefit from the recycled water. LADWP recently completed its Recycled Water Master Plan with the goal of expanding recycled water throughout its service area, some of which is made possible through partnership with West Basin. LADWP and West Basin have a long-standing relationship on recycled water deliveries since the service areas are adjacent to each other. Furthermore, West Basin purchases its source water from the Los Angeles Hyperion Treatment Facility.

We look forward to implementing this Project with West Basin and serving recycled water to the City of Los Angeles. Thank you for your consideration.

If you have any questions, please contact me at (213) 367-0866.

Sincerely,

Susan R. Rowghani  
Director, Water Engineering & Technical Services Division

SRR/PEL:lsf

c: Mr. Richard Nagel, General Manager, West Basin Municipal Water District

**Water and Power Conservation ... a way of life**



This page intentionally left blank.

**Appendix 10-D: Vermont Stormwater Capture and Greenstreet Project Support  
Letter**

This page intentionally left blank.

January 31, 2013

Shahram Kharaghani  
City of Los Angeles Department of Public Works  
Bureau of Sanitation, Watershed Protection Division  
1149 South Broadway, 10<sup>th</sup> Floor  
Los Angeles, CA 90045

RE: Support for the Vermont Avenue Stormwater Capture and Green Streets Project

Dear Mr. Kharaghani,

On behalf of Madison Carroll <sup>CENTRAL</sup> WCC, we appreciate the opportunity to provide the following comments in support of the Vermont Avenue Stormwater Capture and Green Streets Project proposed by the City of Los Angeles in collaboration with Heal the Bay.

As a member of the community, I appreciate the effort of the City to create a project that will create Green Streets along Vermont Avenue and in areas adjacent to it. I appreciate the City of Los Angeles' increasing focus on a multi-benefit Low Impact Development approach, and street improvements that can enhance mobility while promoting benefits in water quality, flood control, heat reduction, and street beautification. The proposed Vermont Avenue Storm Water Capture & Green Street Transit Project will be designed to maximize these benefits in a low-tech, cost-effective manner to serve as an example for future street construction, retrofit, and improvement projects implemented city-wide.

I also appreciate the proposed efforts to engage community members like myself with help from Heal the Bay's and the City Watershed Protection project related efforts. These efforts will create educational opportunities for the community and result in the installation of community-based BMPs such as vegetated areas that treat runoff on residential and commercial private property that could lead to more aesthetic landscapes and to economic benefits to this area.

We therefore support this project application and urge the State and Federal funding sources to provide the full funding as requested for this project. Thank you for your consideration of these comments. If you have any questions, please contact us at 323 608-1366

Sincerely,



This page intentionally left blank.